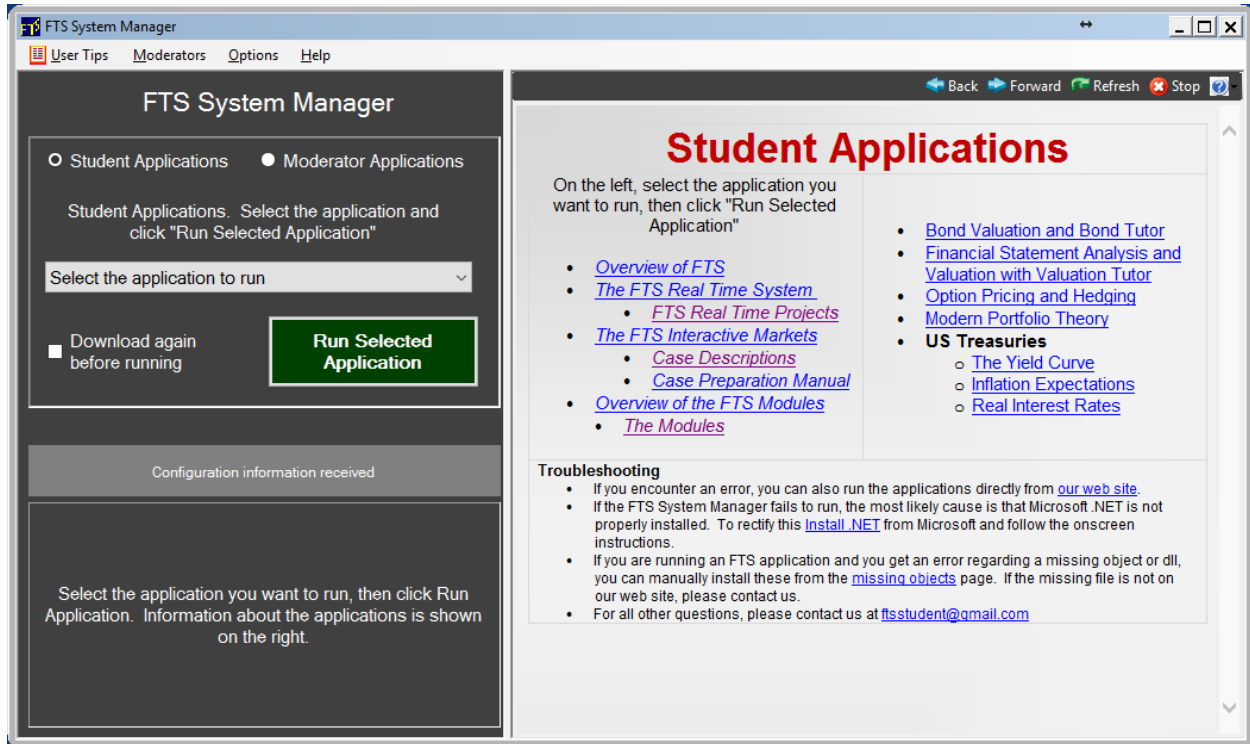
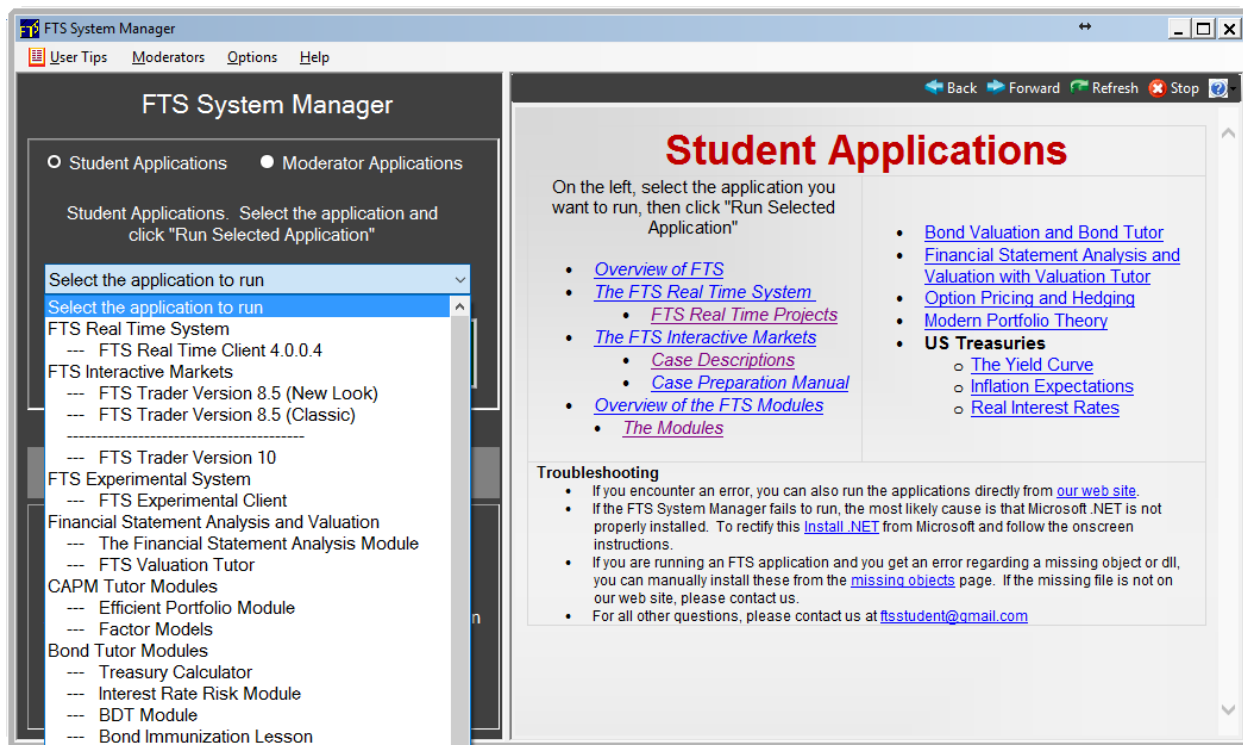


# The FTS System Manager

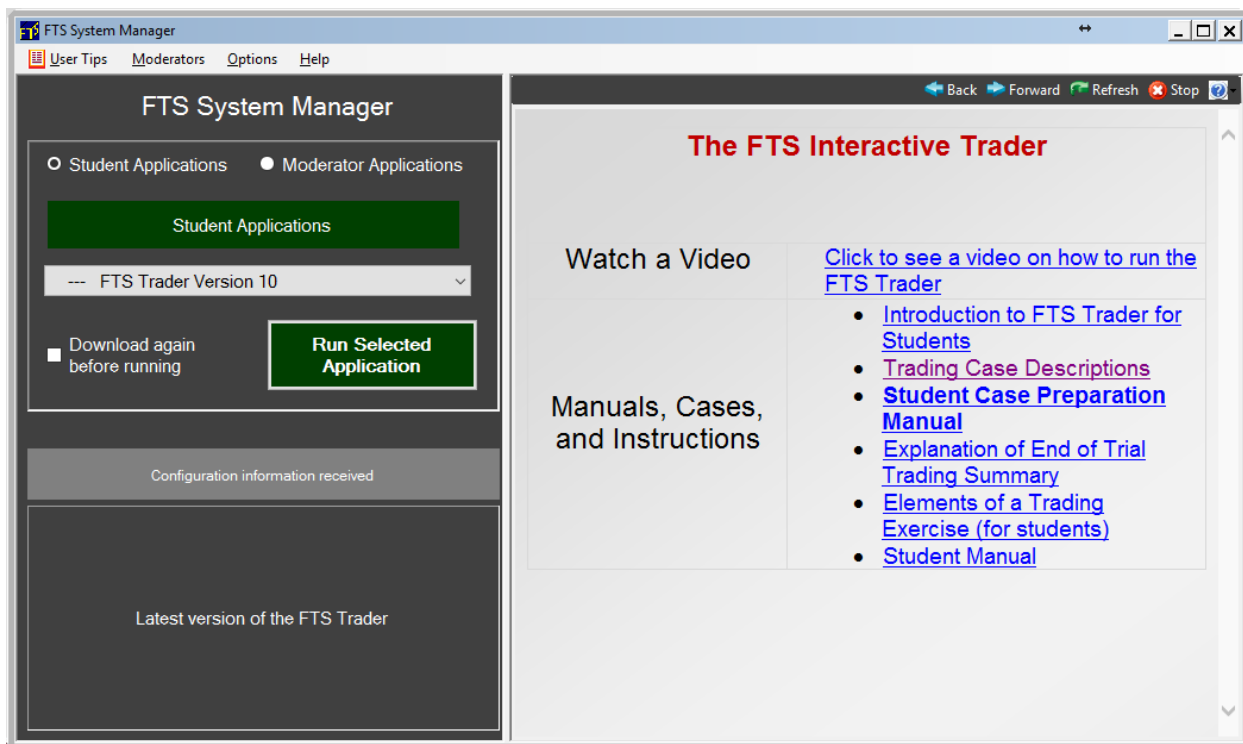
After you launch the FTS System Manager, you will see:



You access applications from the drop-down on the left half:



Once you select an application, the right hand side shows you information relevant for that application. For example, if you select FTS Trader Version 10 (which is what students run when trading in the FTS Interactive Markets), you will see the following:



Once you have selected an application, you run it by clicking the large green button.

Notes:

- The FTS System Manager automatically checks for updates and runs the latest version of a selected application.
- Therefore, it must be allowed to download and run applications through firewalls.